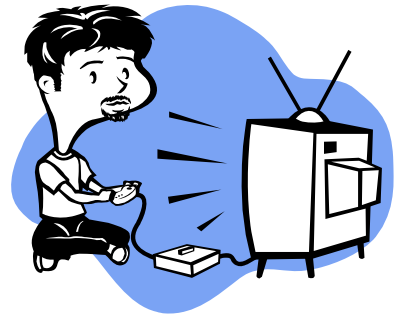


What is CHAMPS?

CHAMPS will investigate how children and adolescents with and without cerebral palsy differ from adults in the way they learn new motor skills. Results of this study will help in the development of rehabilitation programs for individuals with cerebral palsy.



What is involved in participation?

Eligible participants will be asked to attend 2-hour sessions in the Motor Behavior Laboratory on 2 consecutive days

- Session 1: Your vision and movement will be tested followed by practice on a computer game using either the hand you write with or your other hand.
- Session 2: Additional testing of your vision and movement will be followed by testing on the computer game you learned on the first day.



Who Can Participate?

We are recruiting 3 groups of individuals who are:

- Group 1: Adults over 18 years of age and have no history of neurological conditions
- Group 2: Children and adolescents between the ages of 8-14 years and enrolled in regular classes in school.
- Group 3: Children and adolescents between the ages of 8-14 years with the diagnosis of spastic hemiplegic cerebral palsy or spastic diplegic cerebral palsy.



Who Cannot Participate?

Individuals with:

- Neurological conditions or behavioral disorders that require medication
- Medical and orthopedic conditions other than spastic hemiplegic cerebral palsy that interfere with motor performance

How much does it cost?

If you meet the criteria, participation in this research study is **free**. During this study you will find out more about how you move and how you learn to move in new situations.



University of Southern California
Department of Biokinesiology
and Physical Therapy
Motor Behavior &
Neurorehabilitation Laboratory
1540 E. Alcazar Street
Room G30A
Los Angeles, CA 90089-9006

USC HSC IRB #053013

Who do I call for more information?

Katherine Sullivan PhD, PT
Principal Investigator
Univ. of Southern California
Department of Biokinesiology and
Physical Therapy
Motor Behavior & Neurorehabilitation
Laboratory
1540 Alcazar Street, CHP-155
Los Angeles, California 90089-9006
Phone (323) 442-1196

Shailesh Kantak MS, PT
Project Coordinator
Univ. of Southern California
Department of Biokinesiology and
Physical Therapy
Motor Behavior & Neurorehabilitation
Laboratory
1540 Alcazar Street, CHP-155
Los Angeles, California 90089-9006
Phone (323) 442-1196



Directions to USC Health Sciences Campus:

- **From the Valley, Central CA, and Northern CA:**
5 South—Take Mission exit, head North (left) on Mission, stay in right lane, veer off at Eastlake, follow Eastlake to Biggy, make a left into the Eastlake parking lot.
- **From Orange or San Diego County:**
5 North to 10 East, take Soto exit, make a left onto Soto, left onto Alcazar, left onto Eastlake, left into Eastlake parking lot (where Biggy meets Eastlake).
- **From the Coast, West LA, Hollywood:**
10 East—Take Soto St exit, turn left onto Soto, left onto Alcazar, left onto Eastlake, left into Eastlake parking lot (where Biggy meets Eastlake).
- **From San Bernardino County and Eastern CA:**
10 West—Take Soto St exit, turn right onto Soto, left onto Alcazar, left onto Eastlake, left into Eastlake parking lot (where Biggy meets Eastlake).
- **From South Pasadena:**
710 South to the 10 West. Take Soto exit, turn right onto Soto, left onto Alcazar, left onto Eastlake, left into Eastlake parking lot (where Biggy meets Eastlake).
- **From Long Beach:**
710 North to the 10 West. Take Soto St exit, turn right onto Soto, left onto Alcazar, left onto Eastlake, left into Eastlake parking lot (where Biggy meets Eastlake).



CHAMPS: Child Habilitation and Motor Performance Skills Clinical Research Trial



Telephone: (323) 442-1196

Department of
Biokinesiology &
Physical Therapy